



**Better** sound quality.  
**Better** features.  
**Better** price.

**JA** **AUDIO**™

*Speakers to Fit Every Need and Every Lifestyle.*

### I30C



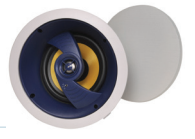
**Watts/RMS:** 30  
**Mounting:** Cam-Lock  
**Grille:** White Metal  
**Frequency:** 48 Hz - 20 kHz  
**Overall Dimensions:** 9 1/2" DIA x 3" DPT  
**Install Dimensions:** 7 1/2" DIA  
**Tweeter Type and Size:** Mylar 1/2"  
**Magnet Weight:** 10 oz  
**Cone Type and Size:** 6 1/2" Coated Paper  
**Db Sensitivity:** 88 db  
**Impedance:** 8  $\Omega$ nominal  
**Speaker Bracket:** SPKBKT-6C  
**Warranty:** Intrasonic 10 Year

### I100C



**Watts/RMS:** 100  
**Mounting:** Cam-Lock  
**Grille:** White Metal  
**Frequency:** 36 Hz - 22 kHz  
**Overall Dimensions:** 10 3/4" DIA x 3 1/2" DPT  
**Install Dimensions:** 9 1/4" DIA  
**Tweeter Type and Size:** 360' Directional Laminated Alum PP1  
**Magnet Weight:** 13.3 oz  
**Cone Type and Size:** 8" Laminated PP  
**Db Sensitivity:** 89 db  
**Impedance:** 8  $\Omega$ nominal  
**Bass and Treble:** 3 Position Adjustable  
**Speaker Bracket:** SPKBKT-8C  
**Warranty:** Intrasonic 10 Year

### EX-206C



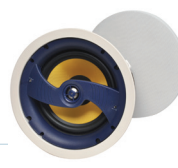
**Power Handling:** 5-100  
**Mounting:** Cam-Lock  
**Grille:** White Aluminum  
**Frequency:** 55 Hz - 22,000 Hz  
**Dimensions:** 9 1/8" DIA x 5 1/4" DPT  
**Install Dimensions:** 8 3/8" DIA  
**Cone Type and Size:** 6.5" Yellow Fiberglass Cone with a Rubber Surround  
**Crossover:** Hi-End 18 dB, Adjustable for Tweeter Level  $\pm$ 3 dB  
**Angel Degree:** 20  
**Tweeter:** 1" Titanium Dome Swivel  
**Efficiency:** 89 db  
**Impedance:** 8  $\Omega$ nominal, 6  $\Omega$ minimum  
**Speaker Bracket:** SPKBKT-6C  
**Warranty:** Intrasonic 10 Year

### JA-C8AII



**Power Handling:** 10-150  
**Mounting:** Cam-Lock  
**Grille:** White Aluminum  
**Frequency:** 42 Hz - 22,000 Hz  
**Overall Dimensions:** 11" DIA x 3 1/2" DPT  
**Install Dimensions:** 9 1/2" DIA  
**Cone Type and Size:** 8" Aluminum Cone with a Rubber Surround  
**Crossover:** 18 dB High - Low pass  
**Adjustable Crossover:** Tweeter 0/-3 dB  
**Tweeter:** 1" Aluminum Dome Swivel with Ferrofluid Cooled Voice Coil  
**Efficiency:** 91 db  
**Impedance:** 8  $\Omega$ nominal, 6  $\Omega$ minimum  
**Speaker Bracket:** SPKBKT-8C  
**Warranty:** Intrasonic 10 Year

### EX-C80II



**Power Handling:** 45-150  
**Mounting:** Cam-Lock  
**Grille:** White Aluminum  
**Frequency:** 40 Hz - 20 kHz  $\pm$ 3 dB  
**Overall Dimensions:** 10 3/4" DIA x 5 1/4" DPT  
**Install Dimensions:** 9 1/2" DIA  
**Cone Type and Size:** 8" Yellow Fiberglass Cone with Rubber Surround  
**Crossover:** Hi-End 12 dB, Adjustable for Tweeter & Woofer  
**Tweeter:** 1" Titanium Dome Swivel Tweeter with Ferrofluid Cooled Voice Coil  
**Db Sensitivity:** 88 db  
**Impedance:** 8  $\Omega$ nominal, 6  $\Omega$ minimum  
**Speaker Bracket:** SPKBKT-8C  
**Warranty:** Intrasonic 10 Year

### I100W



**Power Handling:** 100  
**Mounting:** Cam-Lock  
**Grille:** White Metal  
**Frequency:** 36 Hz - 22 kHz  
**Dimensions:** 10" W x 14 1/4" H x 3 1/2" DPT  
**Install Dimensions:** 8 7/8" W x 12 7/8" H  
**Tweeter Type and Size:** 360' directional Laminated Alum PP1  
**Magnet Weight:** 13.3 oz  
**Cone Type and Size:** 8" Laminated PP  
**Db Sensitivity:** 89 db  
**Impedance:** 8  $\Omega$ nominal  
**Bass and Treble:** 3 Position Adjustable  
**Speaker Bracket:** SPKBKT-8IW  
**Warranty:** Intrasonic 10 Year

### JA-SS7



**Power Handling:** 80 (120 Watts Max)  
**Frequency:** 55 Hz - 600 Hz  
**Overall Dimensions:** 9 7/8" W x 13" H x 14" DPT  
**Cone Type and Size:** 6" x 9" Long-Throw Woofer to Reproduce Low Frequency's  
**Bass Booster:** 20 Hz + 5 dB  
**Frequency:** 18 dB High - Low Pass Auto power input  
**Signal Level:** 5 mv  
**Impedance:** 8  $\Omega$ nominal  
**Warranty:** Intrasonic 2 Year

### JA-T5



**Power Handling:** 20-120  
**Mounting:** Bracket  
**Frequency:** 50 Hz - 22,000 Hz  
**Color:** White  
**Dimensions:** 7 1/8" W x 9 1/8" H x 6 9/17" DPT  
**Cone Type and Size:** 5 1/4" Polypropylene with a Rubber Surround  
**Tweeter:** 5/8" liquid-cooled polycarbonate  
**Sensitivity:** 89 dB 1W/1M  
**Impedance:** 8  $\Omega$ minimum  
**Warranty:** Intrasonic 2 Year

### JA-B3II



**Power Handling:** 100 (35 Watts Continuous)  
**Mounting:** Adjustable Swivel Bracket Included  
**Frequency:** 250 Hz - 18 kHz  
**Color:** White or Black  
**Dimensions:** 3 1/4" W X 7" H x 4 3/4" DPT  
**Sensitivity:** 91 dB/Wm  
**Impedance:** 6  $\Omega$ minimum  
**Warranty:** Intrasonic 10 Year

### JA-BT-VC



**Stereo Wireless Volume Control**  
**30 Watts**  
**Bluetooth:** 3.0+EDR stereo module High efficiency 30Wx2 class D amplifier  
**Frequency range:** 20-20k Hz  
**Stereo inputs:** 3.5mm  
**Bluetooth® Technology**  
**Approx.** 30' Distance

### B3-HTPACK



**5.1 Mini-Cube Surround Sound**  
**Includes:**  
 (5) Each JA-B3 Mini Cubes  
 (1) JA-SS10 Subwoofer  
 (1) I51W Home Theater Wall Plate  
**Colors:** White or Black Mini-Cubes

### JA-VNB-75



**Power Handling:** 75 RMS/150 Max  
**Attenuation:** 34-0 dB in 12 position  
**Frequency:** 35 Hz - 20 kHz  
**Color:** White  
**Overall Dimensions:** 14 1/8" x 10 1/8" x 4"  
**Warranty:** Intrasonic 2 Year

### EX-R6T



**Power Handling:** 5-100  
**Mounting:** Cam-Lock  
**Grille:** White Aluminum  
**Frequency:** 52 Hz - 22,000 Hz  
**Overall Dimensions:** 11" DIA x 6" DPT  
**Install Dimensions:** 9 1/4" DIA  
**Cone Type and Size:** Pivoting 6.5" Yellow Fiberglass Cone with a Rubber Surround  
**Crossover:** Hi-End 12 dB, Adjustable for Tweeter & Woofer Level  $\pm 3$  dB  
**Tweeter:** Pivoting 1" Titanium Dome Swivel  
**Efficiency:** 88 db  
**Impedance:** 8  $\Omega$ nominal, 6  $\Omega$ minimum  
**Speaker Bracket:** SPKBKT-8C  
**Warranty:** Intrasonic 10 Year

### JA-I8AII



**Power Handling:** 100  
**Mounting:** Cam-Lock  
**Grille:** White Metal  
**Frequency:** 36 Hz - 22 kHz  
**Dimensions:** 10" W x 14 1/4" H x 3 1/2" DPT  
**Install Dimensions:** 8 7/8" W x 12 7/8" H  
**Tweeter Type and Size:** 360° directional Laminated Alum PP1  
**Magnet Weight:** 13.3 oz  
**Cone Type and Size:** 8" Laminated PP  
**Db Sensitivity:** 89 db  
**Impedance:** 8  $\Omega$ nominal  
**Bass and Treble:** 3 Position Adjustable  
**Speaker Bracket:** SPKBKT-8IW  
**Warranty:** Intrasonic 10 Year

### JA-I6AII



**Power Handling:** 10-100  
**Mounting:** Cam-Lock  
**Grille:** White Metal  
**Frequency:** 50 Hz - 22,000 Hz  
**Dimensions:** 8 3/4" W x 12 1/16" H x 3 1/4" DPT  
**Install Dimensions:** 7 1/4" W x 10 1/16" H  
**Cone Type and Size:** 6 1/2" Aluminum Cone with a Rubber Surround  
**Crossover:** 24 dB High - Low pass  
**Tweeter:** 1" Aluminum Dome Swivel With Ferrofluid Cooled Voice  
**Coil Efficiency:** 90 db  
**Impedance:** 8  $\Omega$ nominal, 6  $\Omega$ minimum  
**Speaker Bracket:** SPKBKT-6IW  
**Warranty:** Intrasonic 10 Year

### JA-CC5AII



**Power Handling:** 10-100  
**Mounting:** Cam-Lock  
**Grille:** White Aluminum  
**Frequency:** 70 Hz - 22,000 Hz  
**Dimensions:** 17 3/4" L x 8 3/4" H x 3" DPT  
**Install Dimensions:** 16 3/8" L x 7 3/8" H  
**Cone Type and Size:** (2) 5 1/4" Aluminum Cone with a Rubber Surround  
**Crossover:** 18 dB High - Low Pass  
**Adjustable Crossover:** Tweeter 0/-3 dB  
**Tweeter:** 3/4" Aluminum Dome Tweeter with Ferrofluid Cooled Voice Coil  
**Efficiency:** 89 db  
**Impedance:** 8  $\Omega$ nominal  
**Speaker Bracket:** N/A  
**Warranty:** Intrasonic 10 Year

### JA-D6AII



**Power Handling:** 10-100 Watts  
**Mounting:** Cam-Lock  
**Grille:** White Aluminum  
**Frequency:** 55 Hz - 22,000 Hz  $\pm 3$  dB  
**Color:** White  
**Overall Dimensions:** 9 1/2" DIA x 3 1/8" DPT  
**Install Dimensions:** 8" DIA  
**Cone Type and Size:** Dual voice coil in-ceiling speaker, 6 1/2" Aluminum Cone with a Rubber Surround  
**Crossover:** 24 dB  
**Tweeter:** (2) 3/4" Aluminum Dome Swivel Tweeter with Ferro fluid Cooled Voice Coil  
**Db Sensitivity:** 90 db  
**Impedance:** 8  $\Omega$ nominal, 6  $\Omega$ minimum  
**Speaker Bracket:** SPKBKT-8C  
**Warranty:** Intrasonic 10 Year

### EX-I65II



**Power Handling:** 5-100 Watts  
**Mounting:** Cam-Lock  
**Grille:** White Aluminum  
**Frequency:** 50 Hz - 22,000 Hz  $\pm 3$  dB  
**Dimensions:** 12" W x 8 1/16" H x 3 11/16" DPT  
**Install Dimensions:** 7 1/4" W x 10 3/4" H  
**Cone Type and Size:** 6 1/2" yellow Fiberglass Cone with a Rubber Surround  
**Crossover:** Hi-End 18 dB, Adjustable for Tweeter & Woofer Level  $\pm$  dB  
**Tweeter:** 1" Titanium Dome Eyeball Swivel Tweeter with Cooled Voice Coil  
**Efficiency:** 90 db  
**Impedance:** 8  $\Omega$ nominal, 6  $\Omega$ minimum  
**Speaker Bracket:** SPKBKT-6IW  
**Warranty:** Intrasonic 10 Year

### JA-PED 4W



**4" 2 Way Pendant Speaker**  
**80 Watts**  
**Tweeter:** 13mm Mylar  
**Woofer:** Polypropylene woofer with rubber surround  
**Crossover:** Hi-6db  
**Transformer:** 100V /8 $\Omega$ /20W/10W/5W  
**Impedence:** 8  $\Omega$   
**Weight:** 1.9KG

### JA-PED 6B



**6.5" 2 Way Pendant Speaker**  
**100 Watt**  
**Tweeter:** 13mm Mylar  
**Woofer:** Polypropylene woofer with rubber surround  
**Crossover:** Hi-6db  
**Transformer:** 100V /8 $\Omega$ /20W/10W/5W  
**Impedence:** 8  $\Omega$   
**Weight:** 2.9KG

### JA-70V-C



**8" Dual Cone 70V Ceiling Loudspeaker**  
 Suitable for any 70V/25V Paging System  
 Dual Cone  
 70V/ 5W 2.5W 1W 0.5W 0.25W  
 25V/ 5W 2.5W 1W 0.5W 0.25W  
**Resonant Frequency:** 110Hz  $\pm 15\%$   
**Dimensions:** 12 7/8" x 2 3/4"  
**Impedance:** 8 $\Omega$   $\pm 15\%$  @ LOW-Z

### JA-VSL-100



**Power Handling:** 100 RMS/180 Max  
**Attenuation:** 34-0 dB in 12 position  
**Frequency:** 35 Hz - 20 kHz  
**Color:** White  
**Warranty:** Intrasonic 2 Year

### JA-RK6-GY



**6.5" Gray Rock Speaker**  
**100 Watt**  
**Tweeter:** 13mm Mylar  
**Woofer:** 6.5" PP Cone W/Rubber Edge  
**Crossover:** Hi-6db  
**Impedence:** 8  $\Omega$   
**Weight:** 2.8KG

### ROCK-RK820



**Power Handling:** 250  
**Frequency:** 100 Hz - 22 kHz 3 dB  
**Color:** Red  
**Cone Type and Size:** 8" Black Polypropylene Cone  
**Tweeter:** 2" Polypropylene  
**Impedance:** 8  $\Omega$ nominal, 6  $\Omega$ minimum  
**Warranty:** Intrasonic 2 Year

### JA-SS10



**Power Handling:** 120  
(200 Watts Max)  
**Frequency:** 50 Hz - 400 Hz  
**Dimensions:** 14 1/2" W x 15 H x 14 1/2" DPT  
**Cone Type and Size:** 10" Long-Throw  
Woofer to Reproduce Low Frequency's  
**Bass Booster:** 20 Hz + 5 dB  
**Frequency:** 50 Hz-400 Hz Auto power input  
**Signal Level:** 5 mv  
**Impedance:** 8  $\Omega$ nominal  
**Warranty:** Intrasonic 2 Year

### I30W



**Power Handling:** 30  
**Mounting:** Cam-Lock  
**Grille:** White Metal  
**Frequency:** 48 Hz - 20 kHz  
**Dimensions:** 8 3/4" W x 12" H x 2 1/2" DPT  
**Install Dimensions:** 7 3/8" W x 10 3/4" H  
**Tweeter Type and Size:** Mylar 1/2"  
**Magnet Weight:** 10 oz  
**Cone Type and Size:** 6 1/2" Coated Paper  
**Db Sensitivity:** 88 db  
**Impedance:** 8  $\Omega$ nominal  
**Speaker Bracket:** SPKBKT-61W  
**Warranty:** Intrasonic 10 Year

### WS-KIT



**2.4G Wireless  
Speaker System**  
**Includes:** Transmitter, Transformer,  
Receiver - additional receivers are  
available (WS-KIT02)

### Learn more today!

Contact your JA Audio  
representative shown below,  
or for more information, visit  
[www.intrasonictechnology.com](http://www.intrasonictechnology.com).

### EX-CC6



**Power Handling:** 35-100  
**Mounting:** Cam-Lock  
**Grille:** White Aluminum  
**Frequency:** 52 Hz - 22,000 Hz  
**Dimensions:** 20 1/4" L x 9" H x 4" DPT  
**Install Dimensions:** 18 3/4" L x 7 3/8" H  
**Cone Type and Size:** (2) 6 1/2" Yellow  
Fiberglass Cone with a Rubber Surround  
**Crossover:** Hi-End 12 dB, Adjustable for  
Tweeter & Woofer Level  $\pm$ 3 dB  
**Tweeter:** 1" Titanium Dome Swivel  
**Efficiency:** 88 db  
**Impedance:** 8  $\Omega$ nominal, 6  $\Omega$ minimum  
**Speaker Bracket:** N/A  
**Warranty:** Intrasonic 10 Year

### The JA Audio Difference

The sound quality from our products is continually tested against the competition, and we beat them every time. To keep this edge, we observe every stage of production in painstaking detail. From superior materials, design flexibility, reliability and efficiency to quality sound reproduction, we make no compromises. Moreover, we're experts in the delivery of aesthetically pleasing products at a reasonable price. We understand what customers need from a manufacturer like JA Audio, and we make those needs our prime directive.

**Don't settle for less, choose JA Audio.**

### The JA Audio Warranty

JA Audio will repair or replace any defect in material or workmanship which occurs during normal use of every product with new or rebuilt part, free of charge in the USA, ceiling, in-wall speakers and outdoor speakers 10 (ten) years and 2 (two) years for subwoofers from the date of original purchase. This warranty does not cover damages in shipment, failures caused by other products not supplied by JA Audio, or failures due to accident, misuse, or alteration of the equipment. This warranty is extended only to the original purchaser, and a purchase receipt invoice or other proof of original purchase date will be required before warranty repairs are provided.

### About Intrasonic Technology

Intrasonic Technology, headquartered in Dallas, TX, manufactures full-featured, easy-to-use music distribution and intercom systems that offer great value for the price. Our diverse line of products includes Music Distribution and Intercom Systems, Video Door Intercom Systems, and a wide variety of ceiling, in-wall, or mini-cube audio speakers, and associated accessories. Product names and model numbers referenced or depicted on this brochure are trademarks or registered trademarks of Intrasonic Technology, Inc.

### JA-C6All



**Power Handling:** 10-100  
**Mounting:** Cam-Lock  
**Grille:** White Aluminum  
**Frequency:** 50 Hz - 22,000 Hz  
**Overall Dimensions:** 9 1/2" DIA x 3 1/8" DPT  
**Install Dimensions:** 8" DIA  
**Cone Type and Size:** 6 1/2" Aluminum  
Cone Woofer with a Rubber Surround  
**Crossover:** 18 dB High - Low pass  
Adjustable Crossover: Tweeter 0/-3 dB  
**Tweeter:** 3/4" Aluminum Dome with  
Ferrofluid Cooled Voice Coil  
**Efficiency:** 89 db  
**Impedance:** 8  $\Omega$ nominal  
**Speaker Bracket:** SPKBKT-6C  
**Warranty:** Intrasonic 10 Year